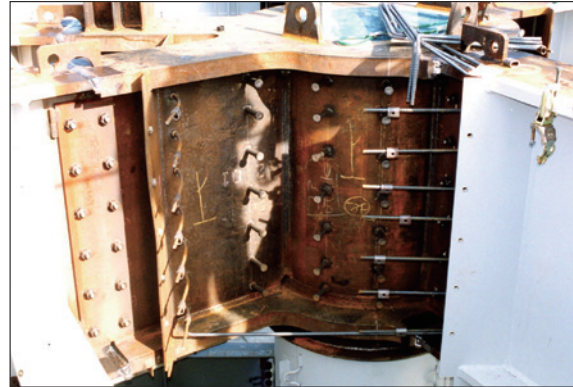


Usage Example



Caution

1. This catalog is intended for architectural design firms and construction companies to safely and effectively install, and handle OS Rebar Sleeve when designing buildings.
2. Make sure to read this catalog, Technical Reference, and Instruction Manual before designing and performing installation.
3. The product specifications and appearance are subject to change without prior notification.
4. Please note that the appearance of the printed materials may be slightly different from the actual products.

Disclaimer

In the event that a failure occurs with OS Rebar Sleeve, we are exempted from responsibility if the failure falls under any of the following cases.

- A failure occurred without following the cautions described in the catalog
- A failure occurred without following design/installation described in the catalog
- A failure occurred due to an unintended usage
- A failure occurred due to installation/handling specification instructed by the designer/installer other than the standard specification.
- A failure caused by remodeling of specification or performance after the delivery.
- A failure caused by morally unusual/unexpected usage, storage, and transportation.
- A failure caused by force majeure (natural disaster, calamity, land subsidence, fire, explosion, mayhem, etc.)
- When a defect was found, and was not promptly reported.

Manufacturer

 **Okabe Co., Ltd.**
okabe

2-8-2 Oshiage Sumida-Ku Tokyo Japan 131-8505

Telephone: +81-3-3624-5306

Facsimile: +81-3-3624-5307

Webpage: <http://www.okabe.co.jp/english>

Distributor/Dealer

The specifications and standards described in the catalog may be changed without prior notification for improvement purposes. We carefully created this catalog, but Okabe will not bear any responsibility whatsoever for any damage caused by typographical errors or omitted words, etc.

Mechanical Rebar Joint

OS Rebar Sleeve

【Evaluation & Certificate】

“Building Construction”
The Building Center of Japan
Evaluation No. RC0077-03

“Civil Engineering”
Public Works Research Center
Certificate No. 0436



Applicable Rebar

Rebar shall be hot-rolled deformed bar prescribed in JIS G3112 “Steel Bars for Concrete Reinforcement.”

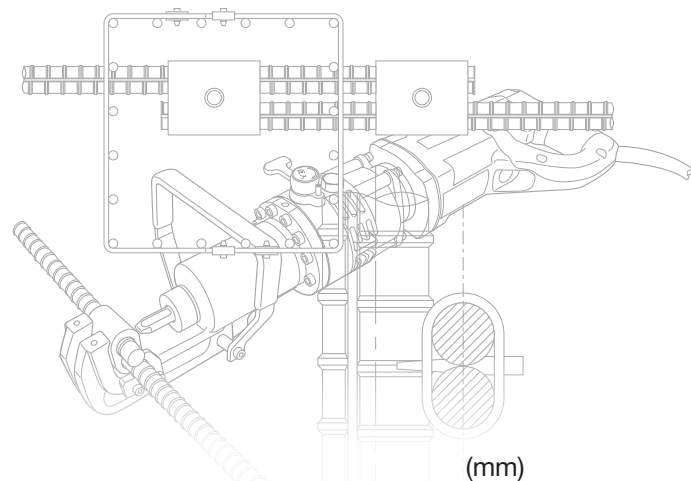
Diameter: D10, D13, D16, and D19 **Standard:** SD295A, SD295B, and SD345

(Please consult with us when applying other than applicable rebars etc.)

Following “Tensile Test Data” are available.

- BS 4449:2005 +A2:2009 And SS560:2010 (Singapore-China)
- BS 4449:1997 Grade 460 (Malaysia-China)
- SNI BJTS40 (Indonesia)


Shape & Dimensions



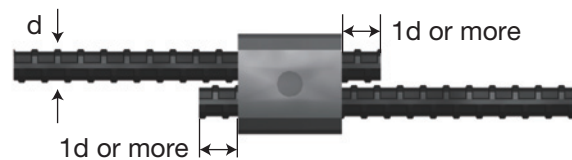
Sleeve

Rebar Diameter	Sleeve Length L	Outer Diameter OD1	Outer Diameter OD2	Thickness t	Wedge-Hole WH
D10	36.0	30.0	18.2	3.1	10.2
D13	40.0	39.0	24.6	4.5	10.2
D16	60.0	46.3	29.0	5.0	14.8
D19	70.0	56.5	34.0	6.0	16.8
Sleeve Shape					

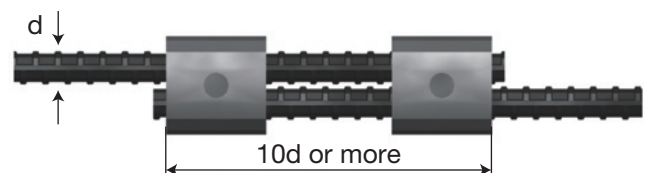
Wedge

Rebar Diameter	Wedge Length L	Wedge Diameter OD1	L1	Shape
D10 / D13	36.0	10.0	12.0	
D16	43.0	14.0	10.0	
D19	48.0	16.0		

Joint Method



Single Sleeve
[Building Construction/Civil Engineering]



Double Sleeve
[Building Construction]

Press Fitting Machine

Cord Type



Battery Type (Lithium Battery)



Necessary Work Space (Both Cord & Battery Type)

	A	B	C	D	E	F
D10	66.0	79.0	72.0	29.0	29.0	52.0
D13			79.0	26.0	26.0	
D16	99.0	109.0	97.0	40.0	29.0	75.0
D19			102.0	35.0		